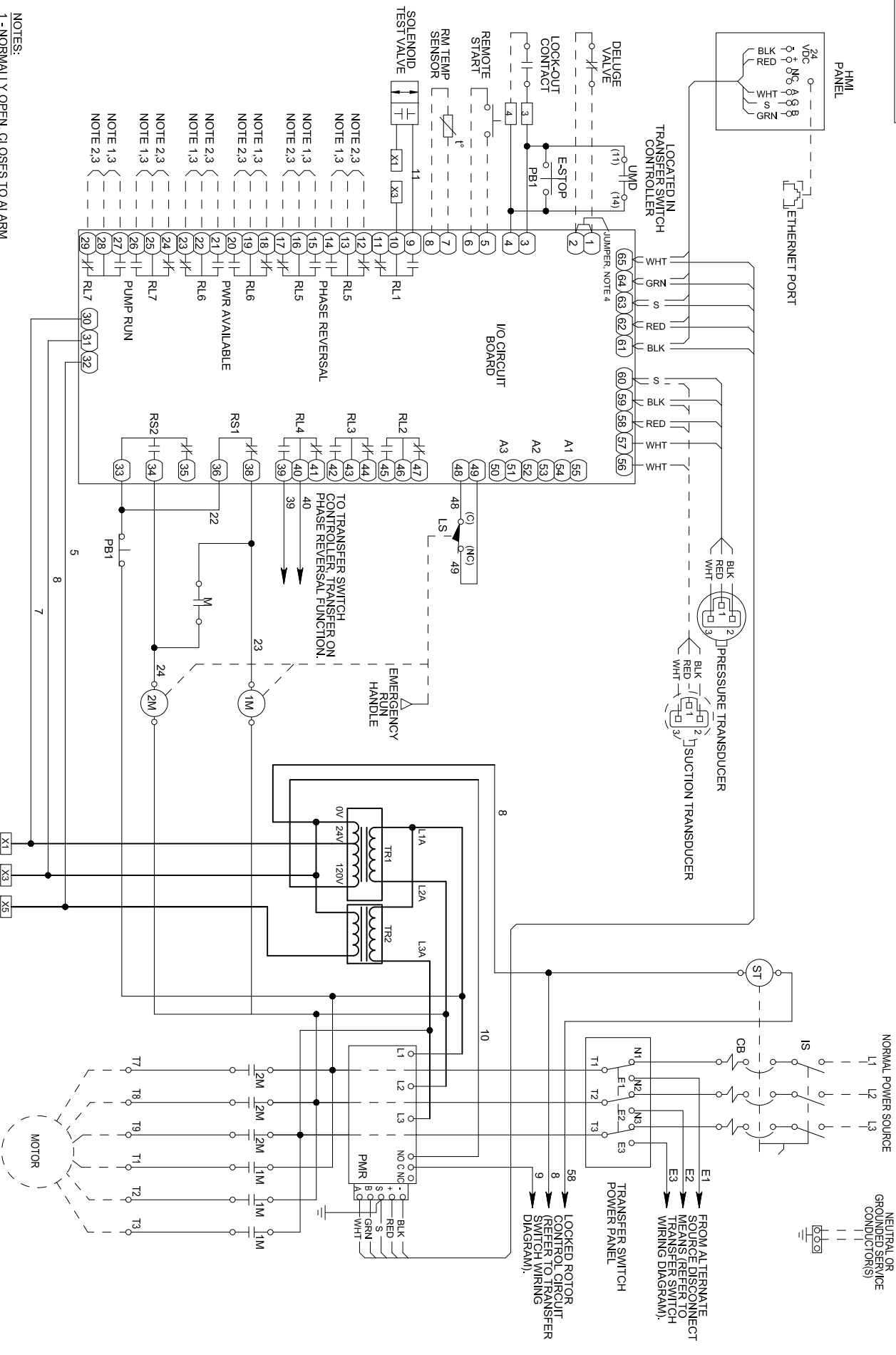


REVISIONS
NEW RELEASE
PER ECN L00141
REV A: 05-24-10
REVERSE N.O. & N.C. CONTACTS OF R.L1, TR2 & TR3 ADDED.
ADD TEST SOLENOID TO R.L1.
ECN E00705, L&T



- NOTES:
- 1 - NORMALLY OPEN, CLOSURES TO ALARM
 - 2 - NORMALLY CLOSED, OPENS TO ALARM
 - 3 - CONTACT RATING: 5 AMP MAX.; 240 VAC; 30 VDC
 - 4 - REMOVE JUMPER WHEN DELUGE VALVE IN USE

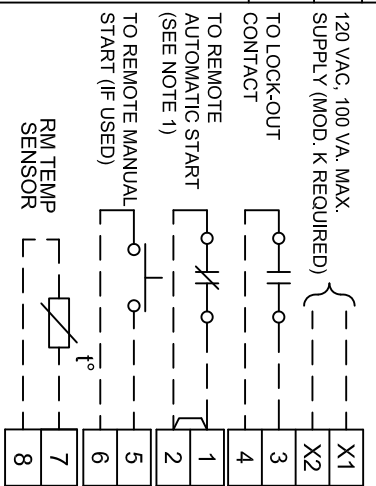
DRAWING LEGEND

- CUSTOMER SUPPLIED COMPONENT OR WIRING
- CUSTOMER CONNECTION TERMINAL BLOCK
- I/O CIRCUIT BOARD CONNECTION
- DEVICE TERMINATION AND DESIGNATION
- OPTIONAL EQUIPMENT

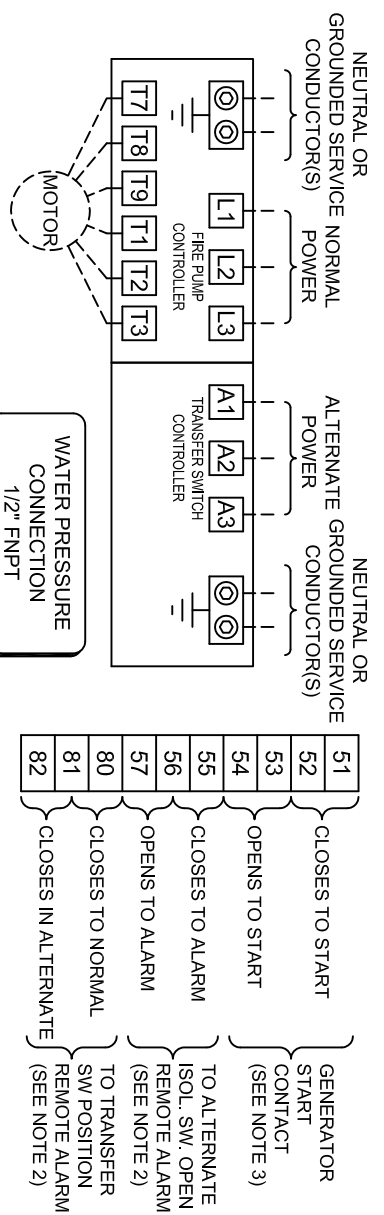
22-01901-01 A

REVISIONS

NEW RELEASE PER ECN L00141
REV A: G SERIES PRODUCT LAUNCH PER ECN E00787



SUITABLE FOR USE AS SERVICE EQUIPMENT



LINE TERMINAL LUG SIZE (PER PHASE)

HORSEPOWER	WIRE CAPACITY (COPPER WIRE)		
	200 V.	230 V.	380 V.
5 - 25	5 - 30	5 - 50	5 - 60
30	---	60	75
40 - 60	40 - 75	75 - 125	100 - 150
75 - 150	100 - 200	150 - 350	200 - 400
200	250	400	450 - 500
---	---	5	5
5 - 60	5 - 75	7.5 - 100	7.5 - 100
75 - 100	100 - 125	125 - 200	125 - 200
---	---	---	---

MOTOR TERMINAL LUG SIZE (PER PHASE)

HORSEPOWER	WIRE CAPACITY (COPPER WIRE)		
	200 V.	230 V.	380 V.
5 - 15	5 - 20	5 - 30	5 - 40
20 - 30	35 - 30	40 - 60	50 - 60
40 - 50	40 - 60	75 - 100	75 - 125
60 - 100	75 - 125	125 - 200	150 - 250
125 - 200	150 - 250	250 - 400	300 - 500
---	---	5 - 50	5 - 60
5 - 25	5 - 30	60 - 75	75 - 100
30 - 40	40 - 50	100 - 150	125 - 200
50 - 100	60 - 75	100 - 150	125 - 200
---	---	200	250

NEUTRAL OR GROUNDING CONDUCTORS

5 - 25	5 - 30	5 - 50	5 - 60	5 - 60	5 - 75
30 - 60	40 - 75	60 - 125	75 - 150	75 - 150	100 - 200
75 - 100	100 - 125	150 - 200	200 - 250	200 - 250	250 - 350
125 - 200	150 - 250	250 - 400	300 - 450	300 - 500	400 - 500

- NOTES:
- REMOVE JUMPER IF A REMOTE AUTOMATIC START DEVICE IS USED. THE CONTACT ON THE DEVICE OPEN TO START THE PUMP.
 - ALARM CONTACT RATING: 5 AMP MAX, 240 VAC, 30 VDC.
 - GENERATOR START CONTACT RATING: 5 AMP MAX, 30 VDC.

CONDUCTOR NOTES

- FOR PROPER WIRE SIZING, REFER TO THE NATIONAL ELECTRICAL CODE, NFPA 70 OR OTHER LOCAL CODES.
- CONTROLLER IS PHASE ROTATION SENSITIVE. OBSERVE PHASE ROTATION L1-L2-L3 MUST BE IN ABC SEQUENCE.
- THE LINE AND MOTOR TERMINALS WILL ACCOMMODATE AS A MINIMUM, COPPER CABLES CAPABLE OF CARRYING 125% OF THE MOTOR FULL LOAD CURRENT.